

PASCO

NEW ITEMS

NEW

Introducing The New EASY-CUT JAWS

PATENT NUMBER 6,629,804 B1
OTHER PATENT PENDING

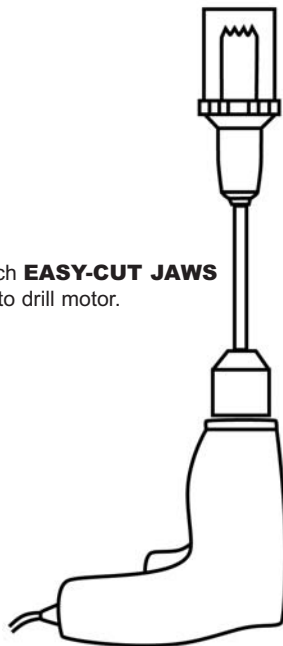
Easily cuts die cast, brass and plastic locknuts
from 1/2" faucet shanks

From the company
that introduced the
"QUICK NUTCRACKER"

EASY-CUT JAWS works with any power drill chuck to safely and quickly cut away faucet mounting nuts. The tool allows a plumber to remove a faucet from a sink or countertop in minutes rather than hours.



Attach **EASY-CUT JAWS**
tool to drill motor.



EASY-CUT JAWS

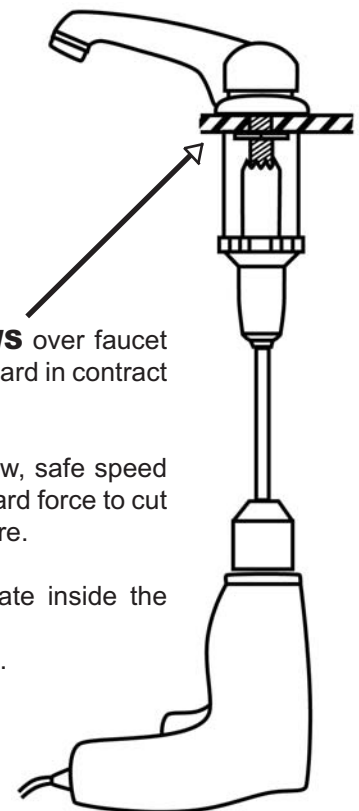
- Is a quality professionally engineered tool.
- Has a hardened steel hex end that fits into any drill chuck.
- Has a built-in spring loaded patented safety chip-guard.
- Uses a heat treated bi-metal cutter that cuts through brass, steel and plastic faucet mounting nuts.
- Works on all faucets brands that have 1/2" water supply shanks.

Position **EASY-CUT JAWS** over faucet shank with the clear chip guard in contact with the sink or countertop.

Operate drill motor at a slow, safe speed applying a light steady upward force to cut away the mounting hardware.

Cutting chips will accumulate inside the chip guard.
Empty guard after each cut.

**PART
NUMBER**
7018



MADE IN U.S.A.

SUMP PUMP CHECK VALVES

- All valves are pressure tested and certified as leak proof.
- Flapper is nested in place to improve durability and longer life.
- Gasket-less design used on valve body.
- Injection molded ABS valve body is extremely tough and durable.
- Internal valve chamber uses a hydrodynamic design to reduce water turbulence & reduce noise.
- Silencer check valves completely eliminate hammering noises associated with pump cycling.
- Vertical or Horizontal

RUBBER HOSE COUPLING



MADE IN U.S.A.

STANDARD

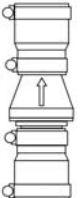
PART NUMBER	HOSE SIZE	LENGTH
29125	1-1/4"	6-3/4"
29150	1-1/2"	7-3/4"
29126	1-1/4" X 1-1/2"	9-1/4"



29125



29126



29150

FULL FLOW

PART NUMBER	HOSE SIZE	LENGTH
29175	1-1/2"	9-1/4"
29120	2"	9-3/4"



29175



29120

"SILENCER"

PART NUMBER	HOSE SIZE	LENGTH
29121	1-1/2"	12"
29122	2"	12-3/4"



29122



29121

- Valves come with all mounting hardware.

TRUE UNION SWING



MADE IN U.S.A.

- True Union coupling for easy swing-out during service or inspection
- Slip x Slip ends
- O-Ring seals
- Ball Valve/Check Valve Combinations

True Union



PART NUMBER	HOSE SIZE	LENGTH
29131	1-1/2"	7-1/8"
29132	2"	7-3/4"

"Silencer" True Union



PART NUMBER	HOSE SIZE	LENGTH
29133	1-1/2"	9-1/2"
29134	2"	10-1/2"

Ball Valve / Check Combo



PART NUMBER	HOSE SIZE	LENGTH
29135	1-1/2"	12-5/8"
29136	2"	13"

"Silencer" Ball Valve / Check Combo



PART NUMBER	HOSE SIZE	LENGTH
29137	1-1/2"	14-1/8"
29138	2"	16-1/2"



SUMP PUMP CHECK VALVES

- Compression Swing fittings on both ends of valve for easy installation.
- Ball Valve/Check Valve Combinations available.
- No gluing required.
- Heavy duty design.

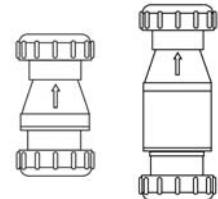
COMPRESSION SWING



MADE IN U.S.A.

Compression

PART NUMBER	PIPE SIZE	LENGTH
29139	2"	9-1/4"
*29140	2"	12-1/4"

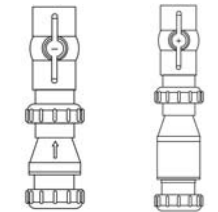


29139 29140

**"Silencer"

Ball Valve / Check Combo

PART NUMBER	PIPE SIZE	LENGTH
29141	2"	16"
*29142	2"	19"



29141 29142

**"Silencer"

Red Brass Water Meter Couplings

Straight



Sold by the pair with washers

PART NUMBER	SIZE
7601	3/4" STRAIGHT
7602	1" STRAIGHT
7603	1-1/4" STRAIGHT



Washers Only

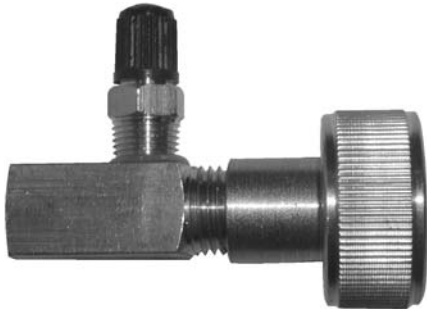
PART NUMBER	SIZE
7608	3/4"
7609	1"
7610	1-1/4"

AIR PRESSURE TEST GAUGE ADAPTER



Add a pressure gauge to our all new brass adapter to test a variety of installations.

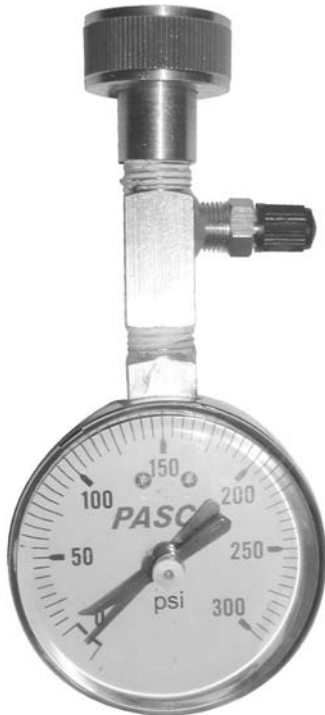
- Use to air test new construction gas or water piping.
- Adapts to any type of supply line material (PEX, copper, pvc, iron).
- Adapts to an existing hose bibb to air test existing water lines or to test re-pipe installations.
- Use air instead of water to test. Prevents the hassle of clean up that may occur with a water test.
- Air test can be used on water supply lines when water supply is not readily available.



Adapter with hose swivel

Individual Adapters

PART NUMBER	DESCRIPTION
1407	1/4" FPT X 1/4" MPT WITHOUT HOSE SWIVEL
1408	1/4" FPT X 3/4" FHT WITH HOSE SWIVEL



Pressure Test Adapter with Gauge

Picture Not Shown

PART NUMBER	PSI	GAUGE SIZE
1434	0-160#	2"
1436	0-300#	
1438	0-160#	2-1/2"
1439	0-300#	

Pressure Test Adapter with Lazy Hand Gauge

Picture Shown

PART NUMBER	PSI	GAUGE SIZE
1447	0-160#	2-1/2"
1448	0-300#	

Chrome Plated Brass Cover Tube for Copper or CPVC

Slips over either copper or CPVC supply lines between the wall and angle stop.



- Fits over 5/8" OD Tube
- 3-1/2" Length

PART NUMBER
8489



Introducing the Posi-Close Conversion Kit for Moen faucets

Now turn a Moen lav faucet into a self-closing faucet, and save thousands of gallons of water.

Posi-Close Conversion Kit contains:
Handle, Cartridge & Aerator



Acrylic push handle



Posi-Close cartridge

MADE IN U.S.A.

It's Simple:
Remove old Moen cartridge using a PASCO 7040 cartridge puller.



Place Posi-Close cartridge in faucet body. replace retaining pin. Add handle. Replace aerator. The Moen faucet is now self-closing.

PASCO'S Posi-Close cartridge operates with a push of the handle.

Regular Moen cartridges operate by pulling the handle.

Replaces Moen 1200 & 1225 cartridges

COMPLETE KIT

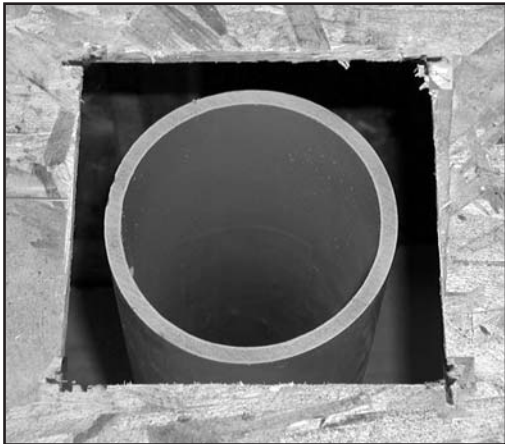
**PART
NUMBER**

21222



QUICK SET
SQUARE
CAST IRON CLOSET FLANGE

THE PROBLEM:



Cast iron pipe lightened for photo

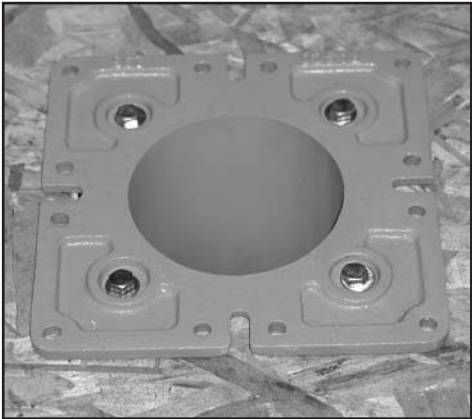
In new construction, contractors everywhere find it easier to cut square holes rather than round holes for DWV pipe and closet flanges.

However, the holes in the sub-floor must be cut larger than the pipe to allow the closet flange to be pushed onto the pipe.

In the majority of installations too much wood has been removed to properly secure a round closet flange.



THE SOLUTION:



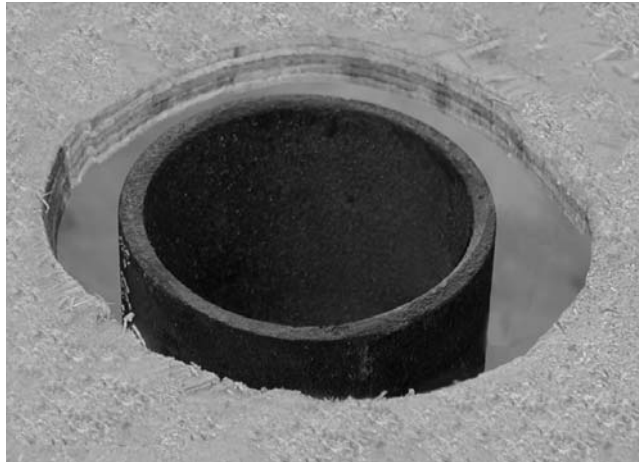
PASCO's NEW Quick Set Square Closet Flange will solve the problem of properly supporting a closet flange mounted in a square hole. Keep in mind that the pipe doesn't support the flange, the sub-floor does. Simply push the QUICK SET CLOSET FLANGE flush on the DWV pipe and alternately tighten the floor stainless steel screws. Secure to sub-floor with brass wood screws.

**PART
NUMBER**
295



Plastic Closet Flange Spacer

THE PROBLEM:



The hole in the wooden subfloor is cut too large to properly secure a closet flange.

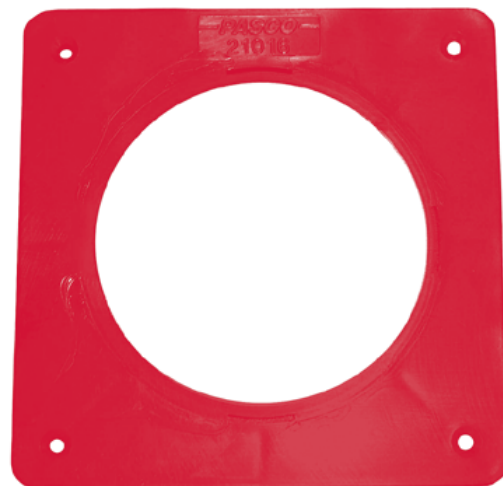
THE SOLUTION:



Provides stability to closet flanges installed in oversized or irregular holes cut in the sub floor.

- Installs below the closet flange.
- Snugly fits PVC, ABS, and Cast Iron closet flanges.
Cut away inner ring to fit the larger OD of a Cast Iron closet flanges.
- 10" Square, 3/8" thick.
- Can be stacked for added height when floor is to be finished with ceramic tile.
- Supported with four brass wood screws.
- Corrosion proof polyethylene.
- Two styles to fit any closet flange.
- Packed 20 per case.

PART NUMBER	CLOSET FLANGE STYLE
21016	Regular-ABS, PVC, Cast Iron
21017	Cast Iron with clamping ring



Heavy Duty No-Hub Couplings

NOW IN STOCK

- 304 Stainless Steel
- Comply with ASTM C-564 and ASTM C-1277
- Conform to CISPI 310
- IAPMO File 4060
- Additional Clamps Provide Better Sealing and Load Distribution
- 5/16" Hex Head Screws



PART NUMBER	SIZE	PACKED PER CASE
PNHC-2HD	2"	75
PNHC-3HD	3"	48
PNHC-4HD	4"	48
PNHC-5HD	5"	15
PNHC-6HD	6"	15
PNHC-8HD	8"	15
PNHC-10HD	10"	12

