

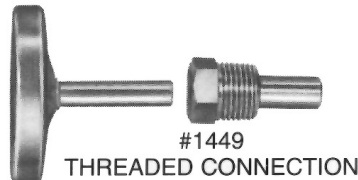
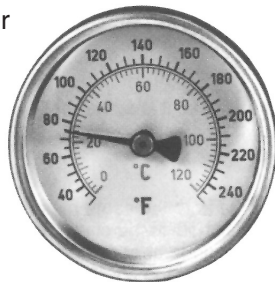
Dial Type Thermometers

- Economical
- Back mount

Dual Scale:

- 30°-240°F, 0,-120°C, Accuracy to 1°
- 5° Increments
- 2-1/2" Face
- Brass wells
- Choice of adapters
- Thermometer can be removed from adapter for easy installation
- Grade B

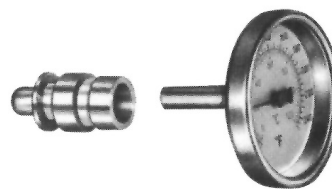
Thermometers
supplied complete
with connection



Compliant 

AB 1953

PART NUMBER	CONNECTION
1449	1/2" MPT
1449-C	Well ONLY



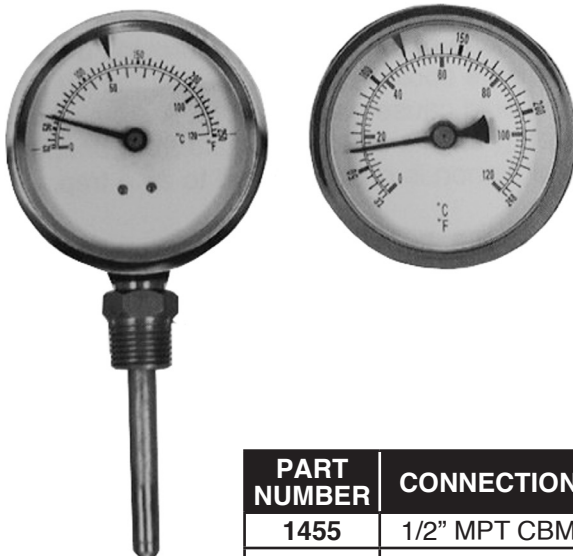
Compliant 

AB 1953

PART NUMBER	CONNECTION
1450	3/4" CWT Solder

Dial Type Thermometers

- Superior quality
 - Back or bottom mount
- Dual scale:
- 32°-240°F, 0°-120°C
 - 3-1/2" diameter
 - 1/2" MPT brass connection
 - 2-1/2" brass element (beyond MPT)
 - Corrosion resistant steel case
 - Grade A



PART NUMBER	CONNECTION
1455	1/2" MPT CBM
1457	1/2" MPT Bottom

Spring Strap-On Surface Thermometer

This new thermometer is specifically designed to provide an economical and accurate surface temperature measurement on any 1/2" to 4" pipe: iron, plastic, steel or copper. Easy on, easy off!

- Dual Scale
40°C/240°F
0°C/120°C
- 5° increments
- Acrylic lens
- Accuracy +/- 3°
- Grade B



PART NUMBER	CONNECTION
1446	4 Stainless Steel Springs