

“Sure Test” Inflatable Test Plugs



- “Grip-Rib”* design acts as a suction cup.
- Hard rubber ends are molded inside the plug, without seams, to prevent stem and end blow-off.
- All brass tire stem valves are uniquely molded in the plug end.
- This design prevents the stem from being pulled off.
- Durable chain eye is molded as part of the plug.
- Pull chain is strong, steel sash.
- Inflation and back pressure information is permanently molded in plug.
- Each **PASCO** “Sure Test” inflatable test plug has the patented “Grip-Rib” design. As the plug is inflated inside the pipe, the “Grip-Rib”* acts as a suction cup to insure a positive seal.

Made in U.S.A.
U.S. Patent 4,964,439

*Patent and “Grip-Rib” design owned by LANSAS PRODUCTS

Short Pattern “Sure Test” Plug

- Maximum Back Pressure
- Air: 10 PSIG
- Water: 30 ft. Hd.
- **Not sold with inflation hose**



PART NUMBER	IPS SIZE	MAX DIAMETER	MAX INFLATION
4730	1-1/4" - 1-1/2"	1-3/4"	30 PSI
4731	2"	2-1/4"	
4732	3"	3-1/4"	
4733	4"	4-1/4"	
4734	6"	6-1/4"	
4735	8"	8-1/4"	25 PSI
4736	10"	10-1/4"	
4737	12"	12-1/4"	

Long Pattern “Sure Test” Plug

- Maximum Back Pressure
- Air: 10 PSIG
- Water: 30 ft. Hd.
- **Sold with 2 ft. extension hose**



PART NUMBER	IPS SIZE	MAX DIAMETER	MAX INFLATION
4743	2"	2-1/4"	30 PSI
4744	3"	3-1/4"	
4745	4"	4-1/4"	
4746	4" x 6"	6-1/4"	

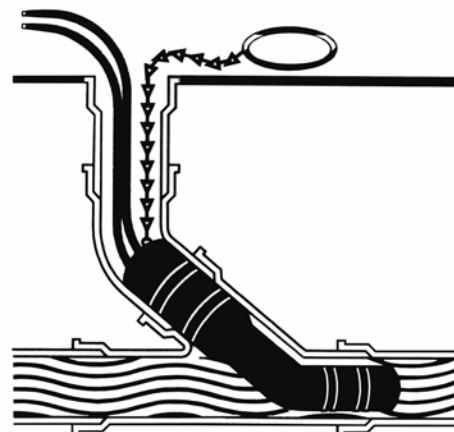
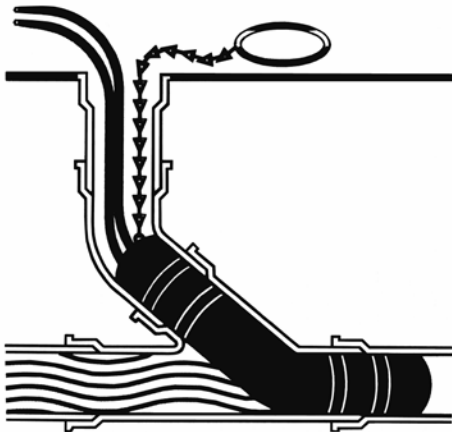
Extension Hoses

- Tire pump connections
- 1/4" Male x 1/4" Female swivel
- Note: Any length hose can be ordered. Please call for quote.



PART NUMBER	LENGTH
4759-2	2 ft.
4759-3	3 ft.
4759-4	4 ft.
4759-5	5 ft.
4759-6	6 ft.

Long Pattern Dual Stage “Sure Test” Plug



- Maximum Back Pressure
- Air: 10 PSIG
- Water: 30 ft. Hd.
- **Two - 2 ft. hoses are molded as part of the plug. Additional hose lengths may be required.**

This 2-hose plug has twin chamber construction which allows the nose of the plug to be inflated or deflated separately from the back of the plug. This dual stage, 2 hose inflation deflation plug protects the contractor from test water overflow.

PART NUMBER	IPS SIZE	MAX DIAMETER	MAX INFLATION
4739	2" - 3"	3-1/4"	30 PSI
4740	3" - 4"	4-1/4"	

Test Plugs



Test & Clean Out Caps

- Fits plastic and hubless cast iron DWV
- Made from the highest quality natural rubber
- Built in cross rib for extra strength
- Inside knurling grips pipe



PART NUMBER	SIZE
4417	1-1/2"
4418	2"
4419	3"
4422	4"
4840	5"
4841	6"

Single Test Plug



COMPLETE TEST PLUG	REPLACEMENT RUBBER ONLY	SIZE
4600	4610	1-1/2"
4601	4611	2"
4602	4612	3"
4603	4613	4"
4604	4614	5"
4605	4615	6"
4606	4616	8"

Econo Test Plug

- Designed with a rubber flange that grips the end of the pipe preventing slippage
- 3" and 4" test plugs supplied with a superfly wingnut.
- For plastic, cast iron DWV



PART NUMBER	SIZE
4801	1"
4802	1-1/4"
4803	1-1/2"
4804	2"
4806	3"
4808	4"

Plumber's Air Pump

- Made of virtually unbreakable polyethylene
- 1-1/4" one piece barrel permits a large volume of air
- 48" Non-kinking hose
- Quick connect thumb valve
- Large easy grip handle
- 2" 0-150PSI gauge
- Easy to read RED pressure range arrow.



We drove our truck over this pump and it STILL WORKS!

PART NUMBER
1424

Knockout Test Caps

- Solvent weld to ABS or PVC DWV
- Fits both plastic SCH 40 and foam core DWV



Made in U.S.A.

PART NUMBER	SIZE
4842	1-1/2"
4843	2"
4844	3"
4845	4"